

Chittenden Central SU and Essex Town SD Data, FY2008 - FY2015

	FY2008	FY2009	FY2010	FY2011	FY2012	FY2013	FY2014	FY2015
Base Amt	7,736	8,210	8,544	8,544	8,544	8,723	9,151	9,285
	na	6.1%	4.1%	0.0%	0.0%	2.1%	4.9%	1.5%
Base H Rate	0.87	0.87	0.86	0.86	0.87	0.89	0.94	0.98
	na	0.0%	-1.1%	0.0%	1.2%	2.3%	5.6%	4.3%
State avg ES/EP	11,069.26	11,599.24	12,033.94	12,204.06	12,287.46	12,788.90	13,546.44	14,008.54
	na	4.8%	3.7%	1.4%	0.7%	4.1%	5.9%	3.4%

If spending per pupil was constant, amount tax rate would have changed annually	-5.7%	-5.0%	0.0%	1.2%	0.2%	0.7%	2.8%
---	-------	-------	------	------	------	------	------

Education spending

		FY2008	FY2009	FY2010	FY2011	FY2012	FY2013	FY2014	FY2015	
			5.0%	2.0%	-0.1%	-0.5%	3.0%	5.1%	2.7%	
Statewide data		1,056,901,908	1,109,754,777	1,132,474,781	1,130,803,523	1,125,189,915	1,158,735,333	1,217,808,313	1,250,342,064	
T069	Essex Junction ID	13	12,493,040	12,889,231	13,074,937	13,317,048	13,020,997	13,291,745	13,843,631	14,896,232
T232	Westford	13	4,249,720	4,236,235	4,362,260	4,343,570	4,203,790	4,186,285	4,393,512	4,568,233
U046	Essex Comm. Ed. Ctr. UHSD	13	15,265,454	16,704,532	16,448,108	16,445,485	16,054,696	16,355,862	17,078,781	17,837,264
T070	Essex Town	59	15,328,045	15,476,116	15,792,749	15,265,256	15,037,706	15,475,293	16,116,577	16,850,162
			Essex Junction ID	3.2%	1.4%	1.9%	-2.2%	2.1%	4.2%	7.6%
			Westford	-0.3%	3.0%	-0.4%	-3.2%	-0.4%	5.0%	4.0%
			Essex Comm. Ed. Ctr.	9.4%	-1.5%	0.0%	-2.4%	1.9%	4.4%	4.4%
			Essex Town	1.0%	2.0%	-3.3%	-1.5%	2.9%	4.1%	4.6%

Equalized pupil

		FY2008	FY2009	FY2010	FY2011	FY2012	FY2013	FY2014	FY2015	
			0.2%	-1.6%	-1.5%	-1.2%	-1.1%	-0.8%	-0.7%	
Statewide data		95,480.83	95,675.95	94,106.71	92,657.98	91,572.18	90,605.91	89,898.80	89,256.73	
T069	Essex Junction ID	13	946.93	1,011.84	1,036.43	998.78	1,013.26	1,027.27	1,026.60	1,060.71
T232	Westford	13	377.52	375.59	371.82	366.82	354.45	342.04	330.07	318.52
U046	Essex Comm. Ed. Ctr. UHSD	13	1,343.77	1,301.36	1,255.29	1,246.67	1,228.00	1,209.06	1,180.58	1,160.93
T070	Essex Town	59	1,176.09	1,165.64	1,186.27	1,187.65	1,174.18	1,183.02	1,198.39	1,209.59
			Essex Junction ID	6.9%	2.4%	-3.6%	1.4%	1.4%	-0.1%	3.3%
			Westford	-0.5%	-1.0%	-1.3%	-3.4%	-3.5%	-3.5%	-3.5%
			Essex Comm. Ed. Ctr.	-3.2%	-3.5%	-0.7%	-1.5%	-1.5%	-2.4%	-1.7%
			Essex Town	-0.9%	1.8%	0.1%	-1.1%	0.8%	1.3%	0.9%

Education spending per equalized pupil

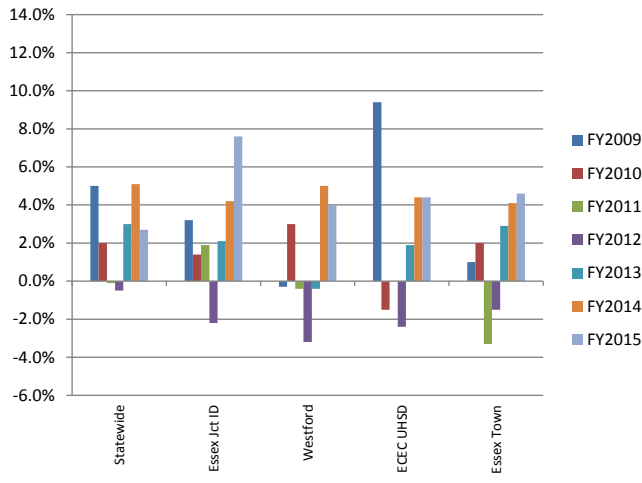
		FY2008	FY2009	FY2010	FY2011	FY2012	FY2013	FY2014	FY2015	
			4.8%	3.7%	1.4%	0.7%	4.1%	5.9%	3.4%	
Statewide data		11,069.26	11,599.24	12,033.94	12,204.06	12,287.46	12,788.90	13,546.44	14,008.54	
T069	Essex Junction ID	13	13,193.20	12,738.41	12,615.36	13,333.31	12,850.60	12,938.90	13,484.93	14,043.64
T232	Westford	13	11,256.94	11,278.88	11,732.18	11,841.15	11,860.04	12,239.17	13,310.85	14,342.06
U046	Essex Comm. Ed. Ctr. UHSD	13	11,360.17	12,836.21	13,103.03	13,191.53	13,073.86	13,527.75	14,466.43	15,364.63
T070	Essex Town	59	13,033.05	13,276.93	13,312.95	12,853.33	12,806.99	13,081.18	13,448.52	13,930.47
			Essex Junction ID	-3.4%	-1.0%	5.7%	-3.6%	0.7%	4.2%	4.1%
			Westford	0.2%	4.0%	0.9%	0.2%	3.2%	8.8%	7.7%
			Essex Comm. Ed. Ctr.	13.0%	2.1%	0.7%	-0.9%	3.5%	6.9%	6.2%
			Essex Town	1.9%	0.3%	-3.5%	-0.4%	2.1%	2.8%	3.6%

Equalized homestead rate, town

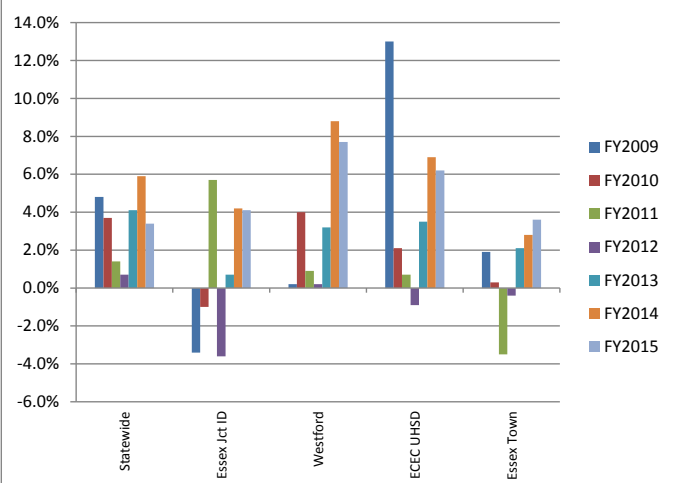
		FY2008	FY2009	FY2010	FY2011	FY2012	FY2013	FY2014	FY2015	
			-1.3%	-1.4%	1.4%	1.8%	4.2%	5.9%	7.2%	
Statewide data		1.2455	1.2298	1.2123	1.2287	1.2514	1.3038	1.3801	1.4792	
T069	Essex Junction ID	13	1.4061	1.3535	1.2868	1.3369	1.3167	1.3408	1.4195	1.5287
T232	Westford	13	1.2660	1.1952	1.1809	1.1919	1.2077	1.2488	1.3673	1.5138
U046	Essex Comm. Ed. Ctr. UHSD	13	-	-	-	-	-	-	-	-
T070	Essex Town	59	1.3912	1.3886	1.3321	1.3062	1.3139	1.3511	1.4182	1.5222
			Essex Junction ID	-3.7%	-4.9%	3.9%	-1.5%	1.8%	5.9%	7.7%
			Westford	-5.6%	-1.2%	0.9%	1.3%	3.4%	9.5%	10.7%
			Essex Comm. Ed. Ctr. UHSD							
			Essex Town	-0.2%	-4.1%	-1.9%	0.6%	2.8%	5.0%	7.3%

Data and Percent Change as Compared to the Prior Year

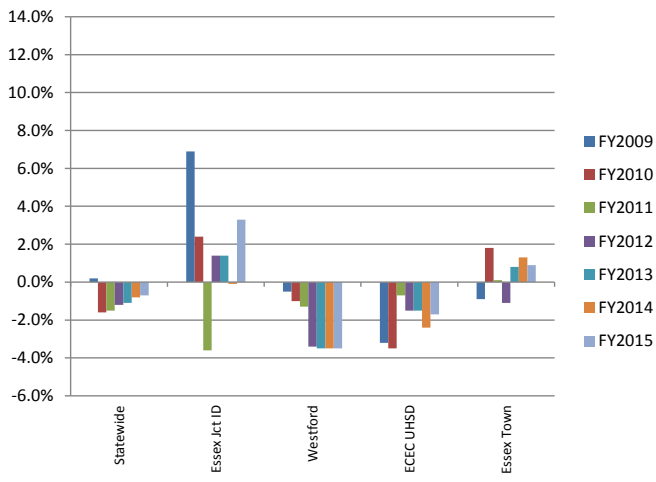
Education Spending, percent change



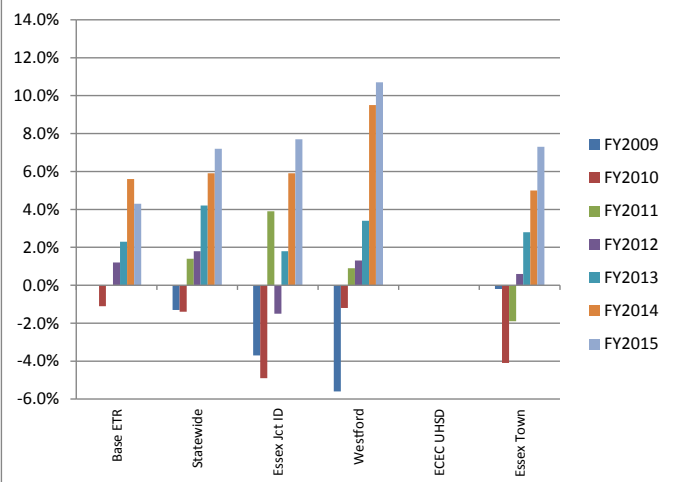
Education Spending per Equalized Pupil, percent change



Equalized Pupil Counts, percent change



Town Equalized Tax Rate, percent change



Data over the Years

